

## ALTUS NR3 QUICK START GUIDE

This Quick Start Guide contains information on how to set up and begin using your Altus NR3

### System components

The following items are shipped as standard:

1. Altus NR3
2. USB data cable
3. 4 x Lithium Ion batteries (Standard 18650 Li-ion)
4. Altus NR3 Battery Charger (4-battery capacity)
5. Battery charger cables for mains and cigarette lighter
6. USB stick containing Altus NR3 manuals



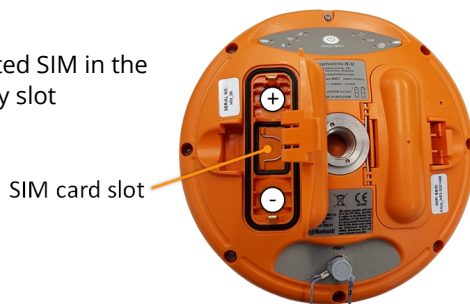
### Additional Equipment Required

- GSM/GPRS cellular modem micro SIM Card with data service
- WiFi capable tablet, PC or smartphone

### Getting Started

#### 1. Installing the SIM card and batteries

- Install an activated SIM in the left-hand battery slot



- Charge the batteries for the Altus NR3 in the 4-bay charger provided.



- Insert 2 fully-charged batteries into the Altus NR3. The positive ends of the batteries should point towards the front panel.
- Press firmly at the position indicated by the grey arrow to lock the chamber



#### 2. Powering up the Altus NR3

- Power on by pressing the power button once. The unit takes about 30 seconds to fully boot up.

**PRESS ONCE  
TO TURN ON\***

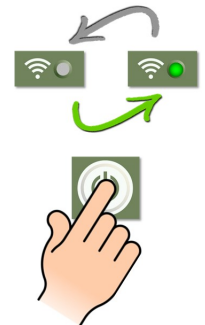


\*To switch off the Altus NR3, press the power button for 2 seconds

#### 3. Turning on WiFi

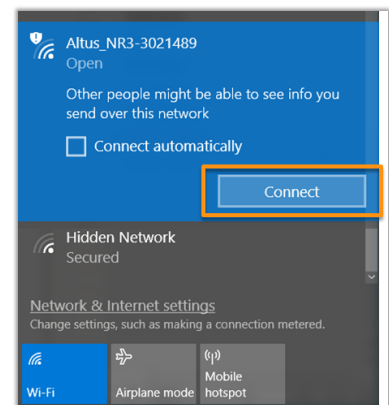
- WiFi is turned on by default and will be available about 30 seconds after powering on
- If the WiFi LED is off, you can toggle WiFi on/off by quickly pressing twice on the power button

**PRESS TWICE TO  
TURN WiFi ON/OFF**

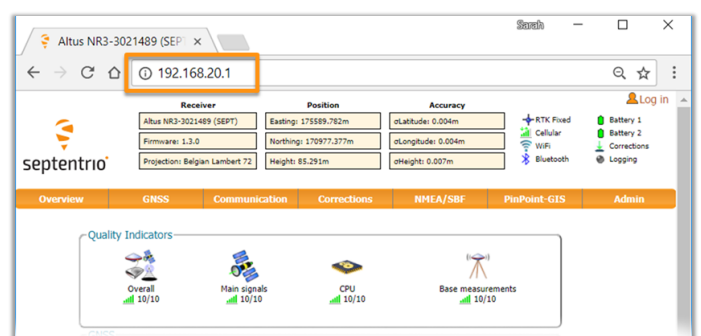


#### 4. Connecting to the Web Interface

- On your PC or mobile device, find the WiFi network beginning with **Altus\_NR3** then click **Connect**



- Open a browser and type **192.168.20.1** in the address bar



## 5. Configuring the cellular modem

- Select **Communications > Cellular** on the Web Interface and enter the relevant cellular information
- Click **OK** when complete

## 6. Configuring NTRIP

- Select **Corrections > NTRIP Client/Server** on the Web Interface then click on **New NTRIP client**
- Enter the details of the NTRIP caster
- Click **OK**

## 7. Connecting via Bluetooth to third-party software

- Follow **Communications > Bluetooth** on the Web Interface and configure the connection
- Click **OK**

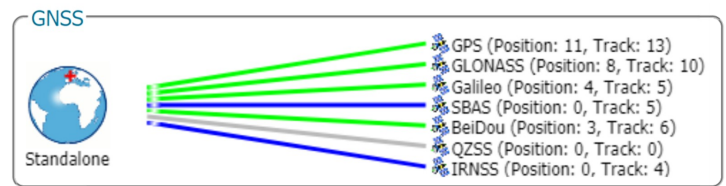
## 8. NMEA streaming through Bluetooth connection

- Select **NMEA/SBF > NMEA/SBF Output** on the Web Interface then click **New NMEA stream**
- Select **Bluetooth** connection type then click on **Next**
- Select the NMEA messages and the interval then click on **Finish**

## 9. Basic monitoring

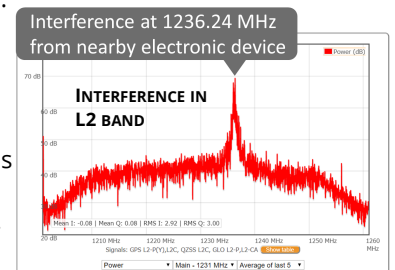
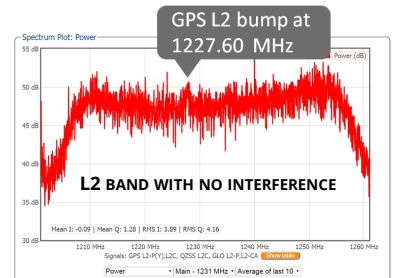
### How many satellites in tracking?

- Select **GNSS > Status** on the Web Interface
- In open sky, the Altus NR3 should track between 15 and 25 GPS and GLONASS satellites
- Constellations used in the PVT are coloured green



### Is there any interference?

- Select **GNSS > Spectrum** on the Web Interface
- Click **Show table** and select **GPS L2-P(Y)**. This frequency band can be vulnerable to interference. The small GPS L2 bump indicated at 1227.6 MHz may be visible.
- Other spikes or anomalous activity in the spectrum may indicate interference.



## 10. Use your favourite application

The Altus NR3 is fully compatible with a large number of third-party hardware and software solutions including SurvCE, Septentrio FieldGenius, Collector for ArcGIS, DigiTerra Explorer. It comes with PinPoint-GIS available as an App for android devices or Web, providing basic data collection functionality via either Esri or to a CSV file.

### For more information:

For first-line support, please contact your Altus NR3 dealer. For further information you can also:

**consult our website:** [www.septentrio.com](http://www.septentrio.com)

**contact Technical Support:** [support@septentrio.com](mailto:support@septentrio.com)

**AsteRx**  
OEM & integrated  
GNSS receivers

**Altus**  
Surveying &  
GIS equipment

**PolarX**  
GNSS reference  
stations

**Software**  
GNSS software  
solutions

### Europe

Greenhill Campus  
Interleuvenlaan 15i  
3001 Leuven, Belgium  
+32 16 30 08 00

### Americas

Suite 200,  
23848 Hawthorne Blvd.  
Torrance, CA 90505, USA  
+1 301 541 8139

### Asia-Pacific

Unit 1901,  
111 Queen's Road West  
Sheung Wan, Hong Kong  
+852 9095 5066

[sales@septentrio.com](mailto:sales@septentrio.com)

[@septentrio](https://twitter.com/septentrio)